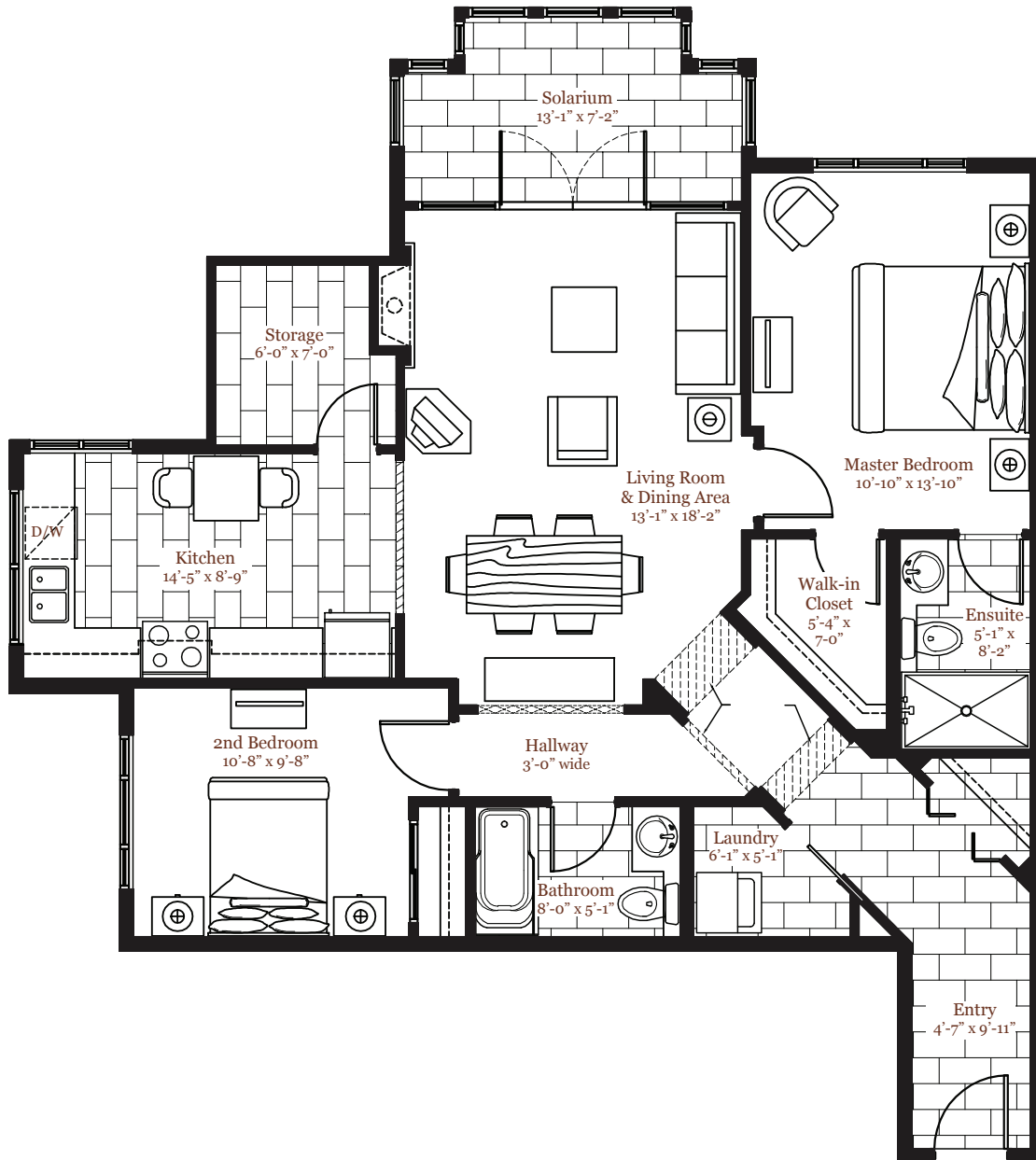


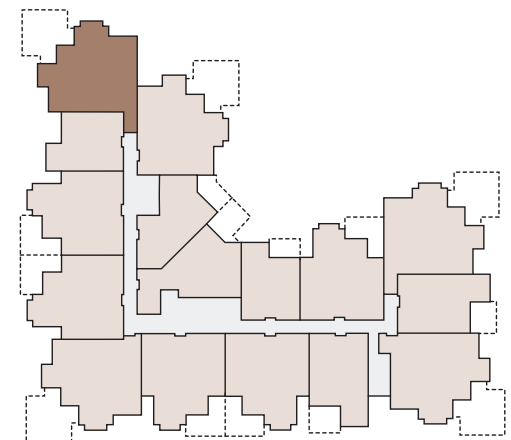


THORNBRIDGE

AT LONGWOOD



Home Type B1
Unit# 404
1152 sq. ft.
2 Bedroom



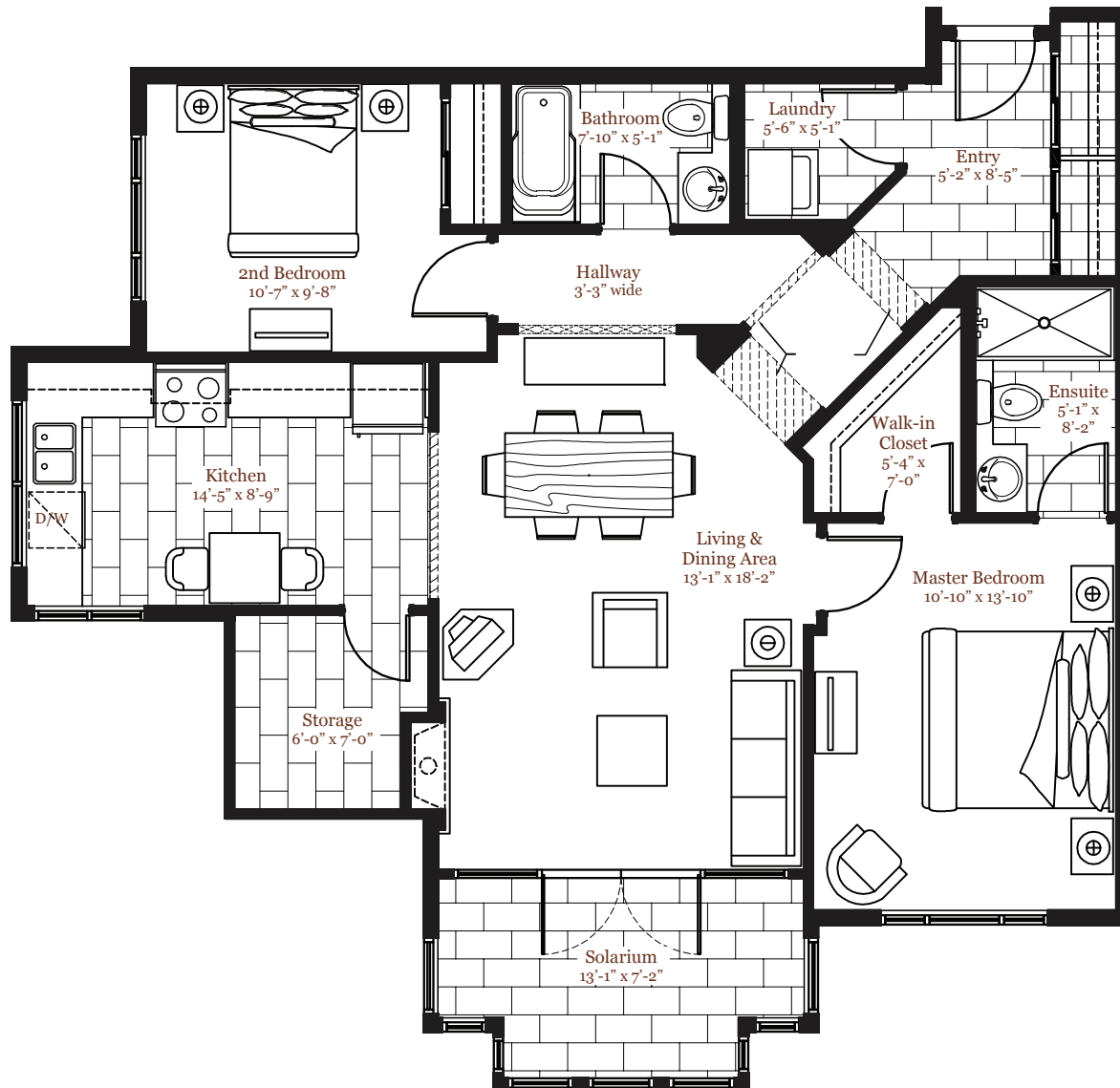
In a continuing effort to maintain the high standards of this development, the developer reserves the right to make modifications and changes to the building design, specifications, features and floor plans as necessary and without notice. Interior square footages and room sizes are based on preliminary measurements and should be considered approximate until final areas can be surveyed. This is not an offering for sale. An offering may only be made by Disclosure Statement.





THORNBRIDGE

AT LONGWOOD

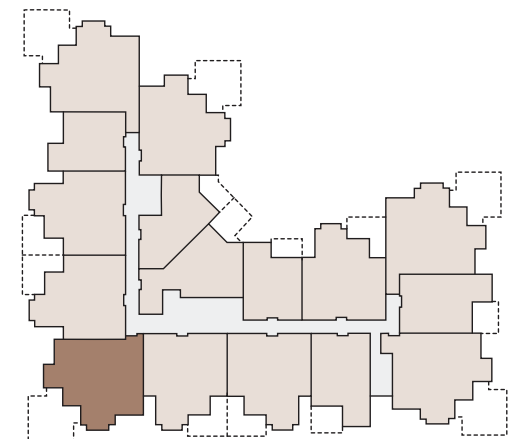


Home Type B1

Unit# 408

1119 sq. ft.

2 Bedroom



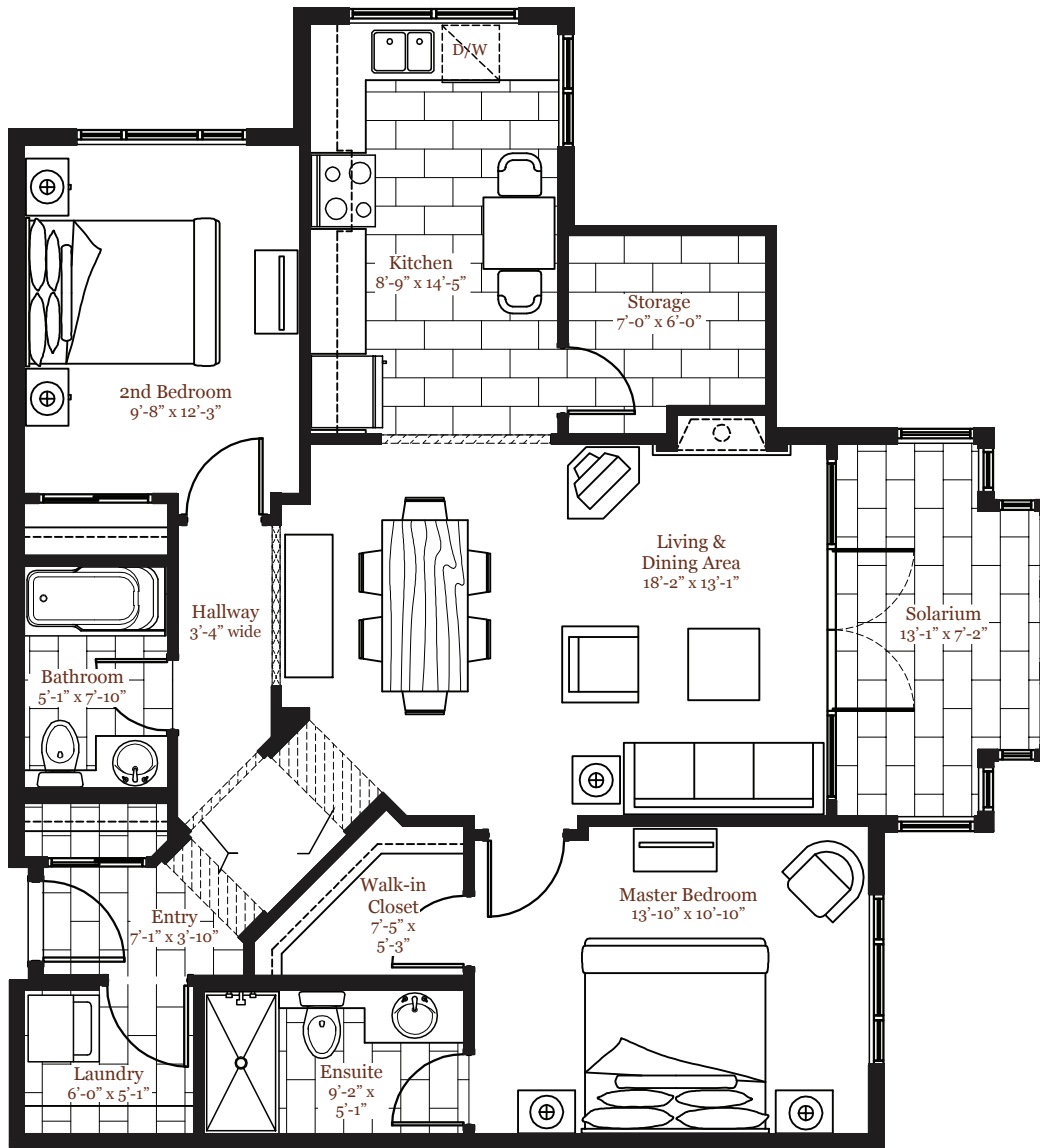
In a continuing effort to maintain the high standards of this development, the developer reserves the right to make modifications and changes to the building design, specifications, features and floor plans as necessary and without notice. Interior square footages and room sizes are based on preliminary measurements and should be considered approximate until final areas can be surveyed. This is not an offering for sale. An offering may only be made by Disclosure Statement.





THORNBRIDGE

AT LONGWOOD

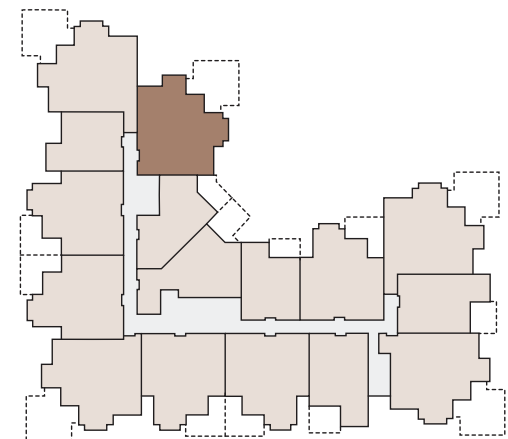


Home Type B1

Unit# 403

1109 sq. ft.

2 Bedroom



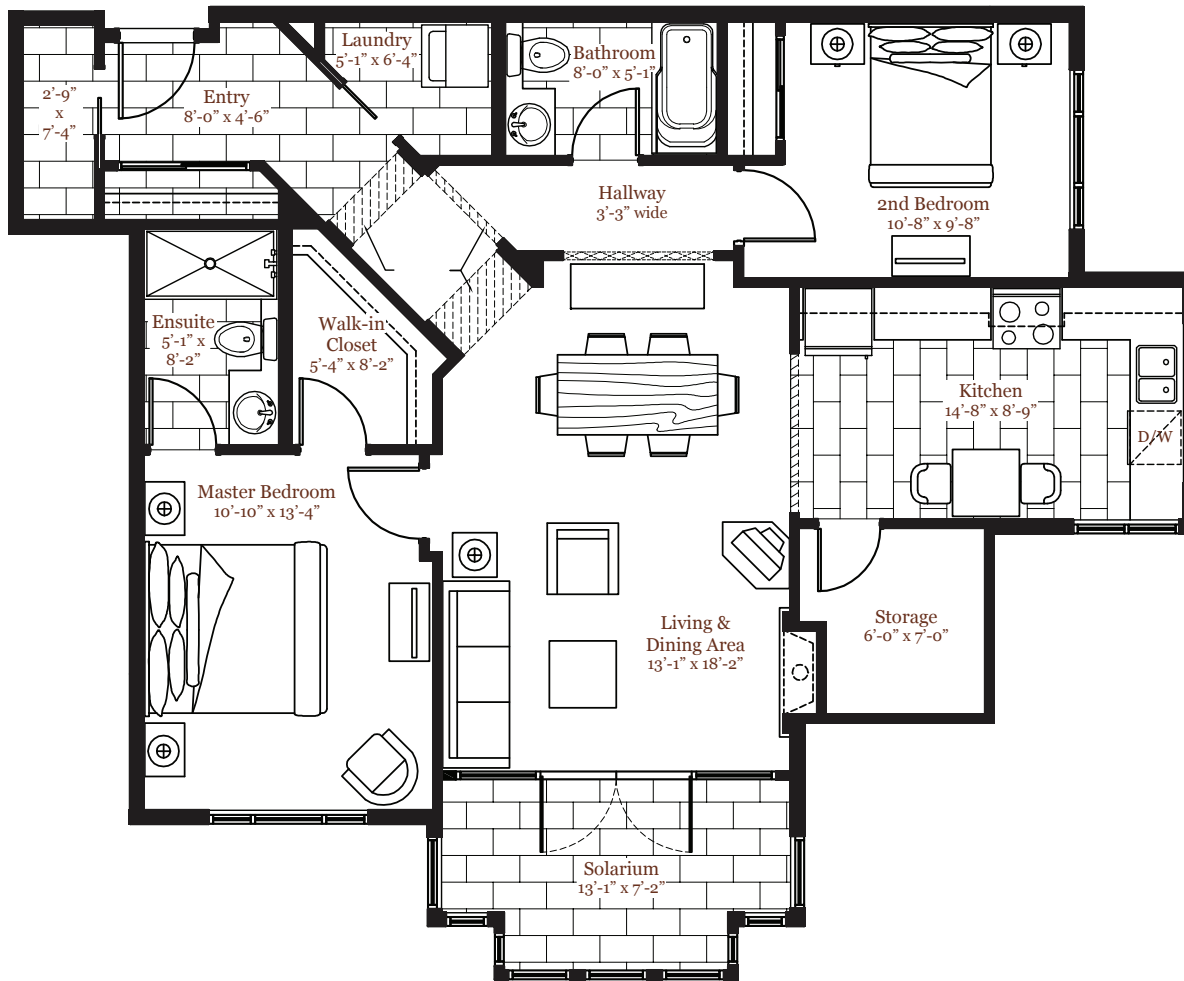
In a continuing effort to maintain the high standards of this development, the developer reserves the right to make modifications and changes to the building design, specifications, features and floor plans as necessary and without notice. Interior square footages and room sizes are based on preliminary measurements and should be considered approximate until final areas can be surveyed. This is not an offering for sale. An offering may only be made by Disclosure Statement.



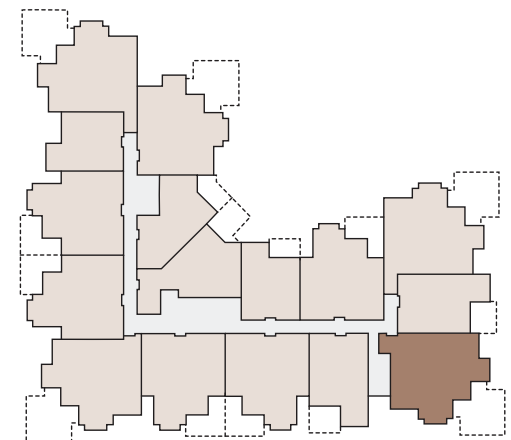


THORNBRIDGE

AT LONGWOOD



Home Type B1
Unit# 412
1141 sq. ft.
2 Bedroom



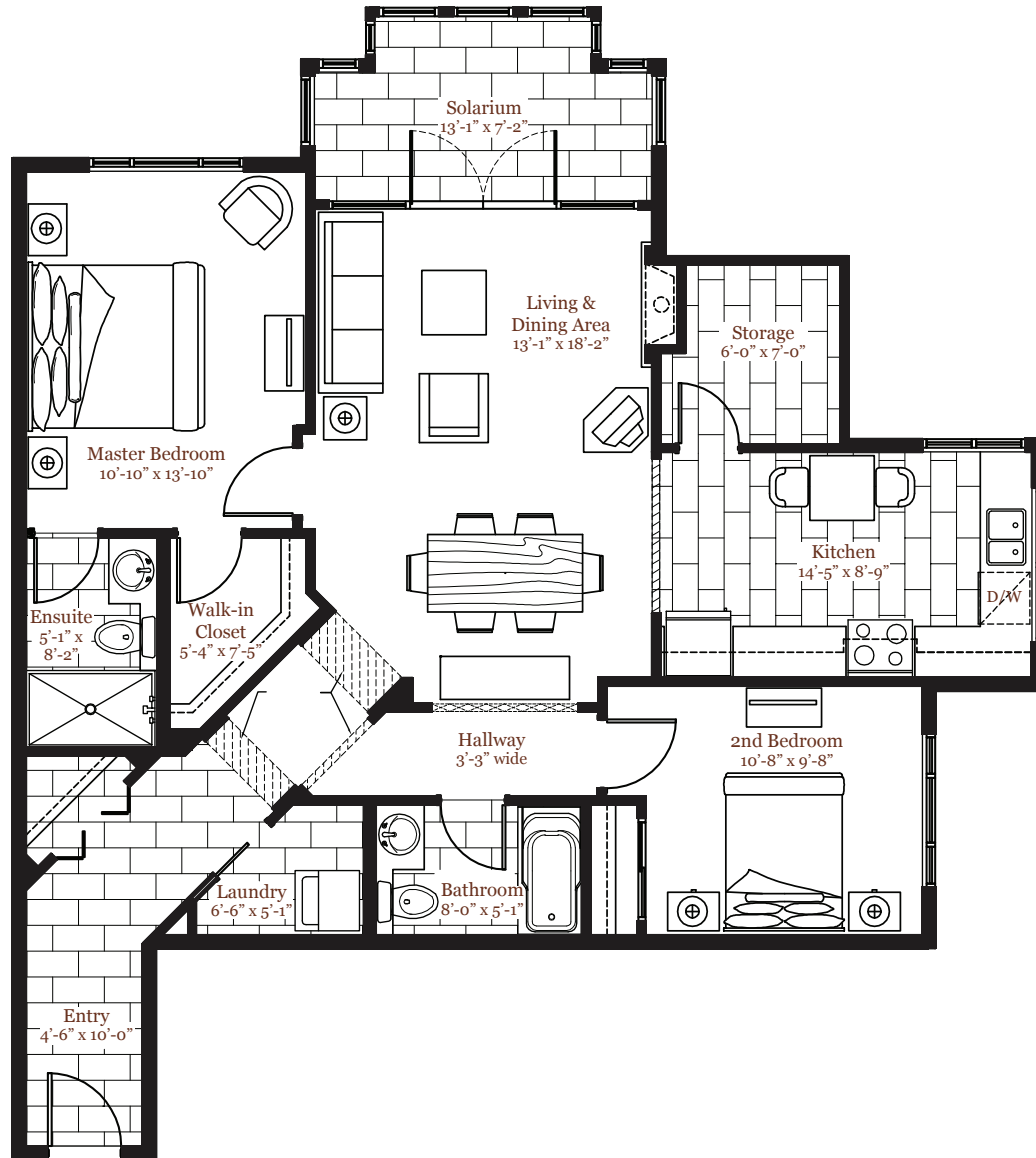
In a continuing effort to maintain the high standards of this development, the developer reserves the right to make modifications and changes to the building design, specifications, features and floor plans as necessary and without notice. Interior square footages and room sizes are based on preliminary measurements and should be considered approximate until final areas can be surveyed. This is not an offering for sale. An offering may only be made by Disclosure Statement.





THORNBRIDGE

AT LONGWOOD

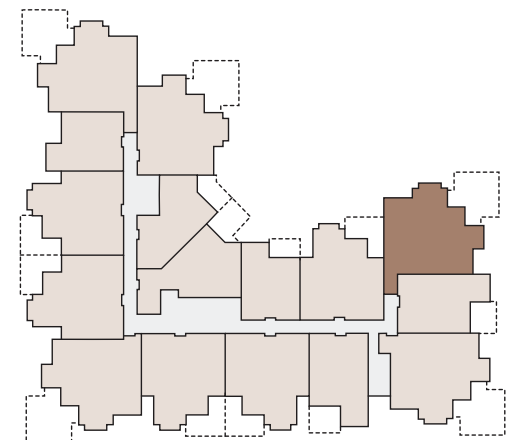


Home Type B1

Unit# 414

1152 sq. ft.

2 Bedroom



In a continuing effort to maintain the high standards of this development, the developer reserves the right to make modifications and changes to the building design, specifications, features and floor plans as necessary and without notice. Interior square footages and room sizes are based on preliminary measurements and should be considered approximate until final areas can be surveyed. This is not an offering for sale. An offering may only be made by Disclosure Statement.

